



# MICRO SD CARD

## Quick-Start Guide



OVER 100 ATARI GAMES INCLUDED



FOR  
Raspberry Pi®

3B/3B+/3A+

## **WELCOME!**

This guide will get you up and running quickly with your new Atari Micro SD Card.

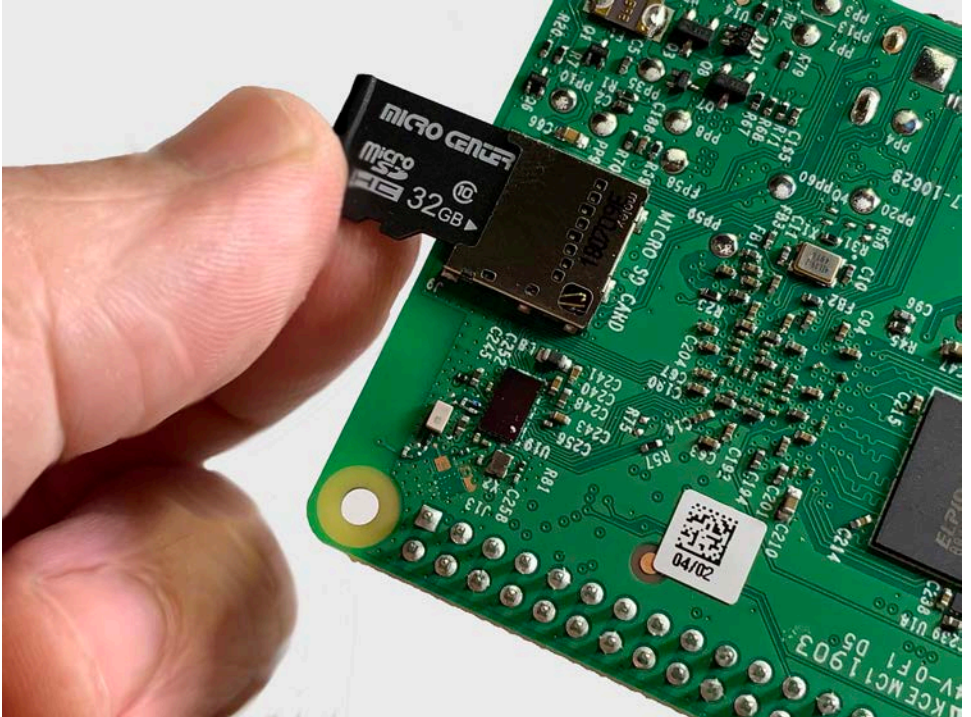
### **What You Need to do to Get Up and Running:**

- ✓ This Atari Games Micro SD card requires a Raspberry Pi 3B or B+
- ✓ Some type of USB Controller or USB Keyboard and Mouse

### **Proper Procedure for Raspberry Pi Shutdown:**

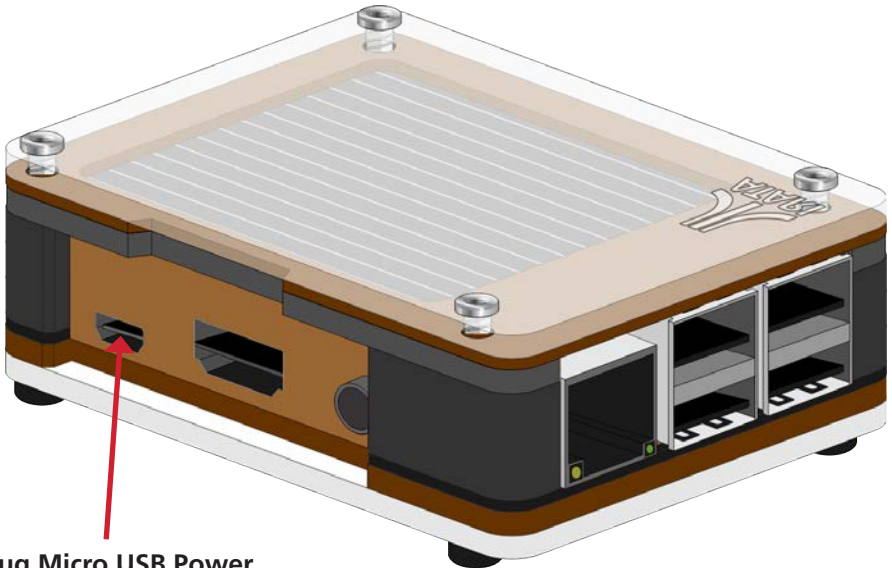
Since this is a full fledged computer, it is important that you shut down properly or you may corrupt the operating system. Please see page 11.

**Step 1:** Insert the provided Atari games microSD card into the Raspberry Pi microSD card slot on the bottom of the board. Make sure to orient it correctly. The small exposed electrical connections should be facing the Raspberry Pi when inserted.



**Step 2:** Power up your Raspberry Pi by plugging in the power adapter with the micro USB connector directly into the Raspberry Pi board.

*NOTE: Case shown here for illustration purposes. You may or may not be using a case.*

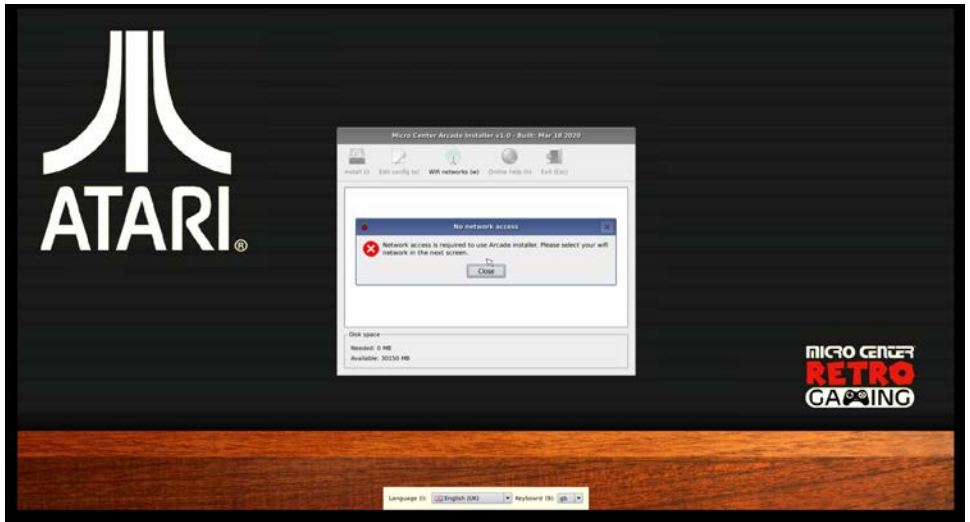


**Plug Micro USB Power adapter here.**

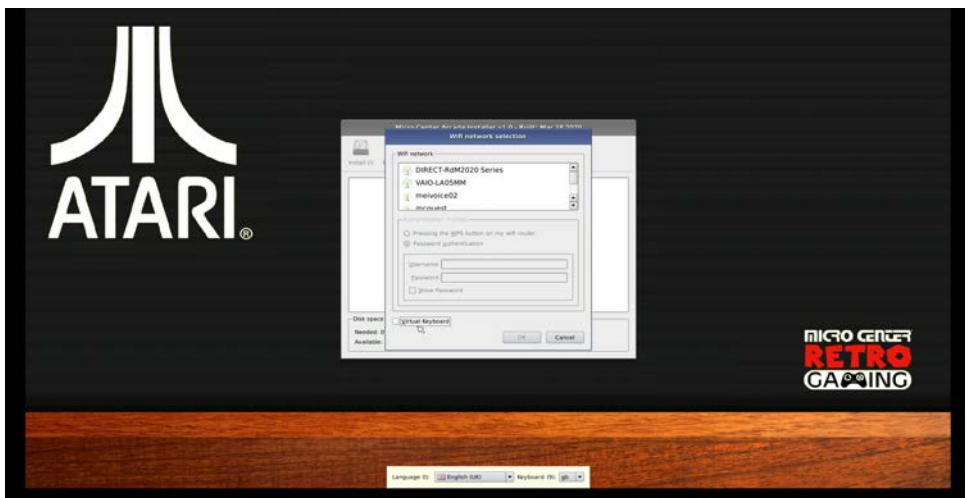
*Tip: Nothing showing up on your monitor? Make sure to select the appropriate HDMI input on your tv or computer monitor.*

**Step 3:** Upon first boot, you will be presented with a menu and asked to connect your WiFi.

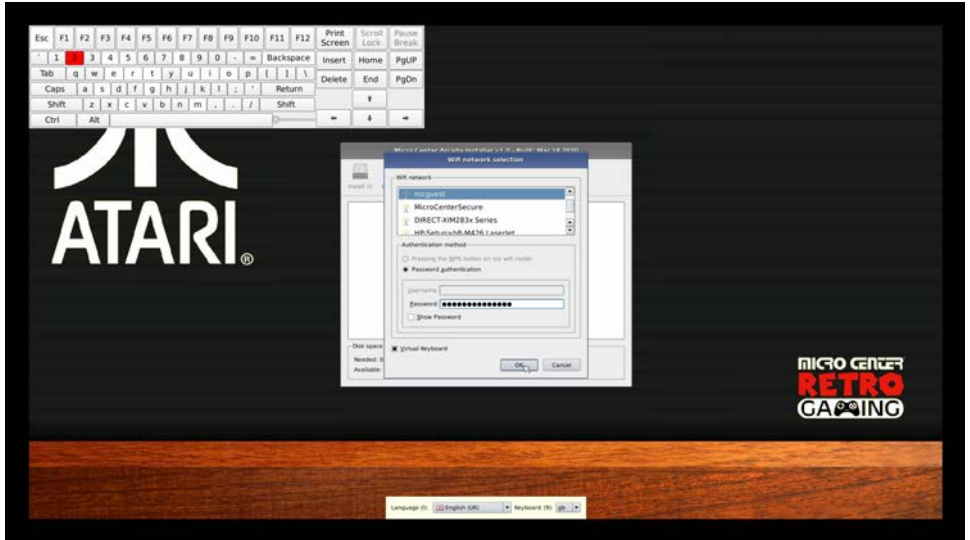
*Note: If you are connected to the internet via an Ethernet cable, please move to Step 4.*



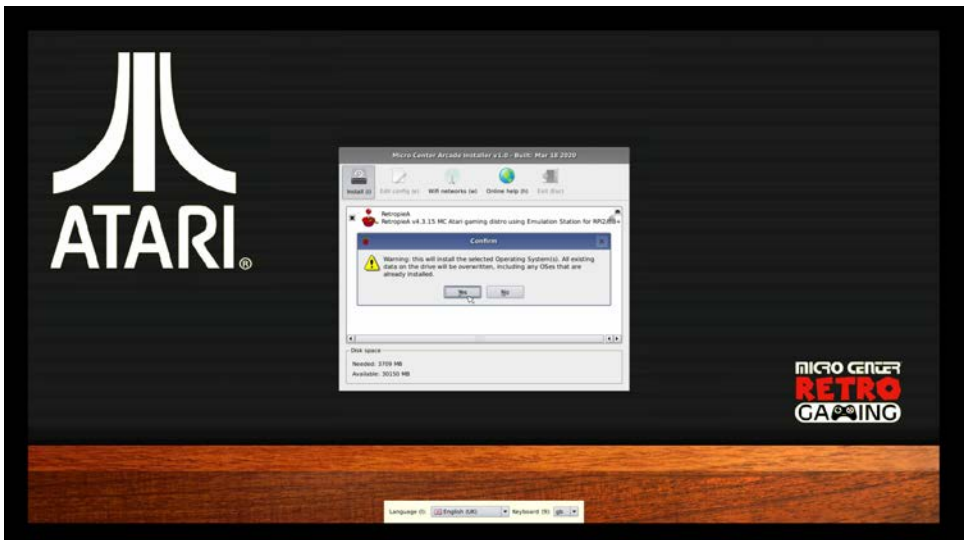
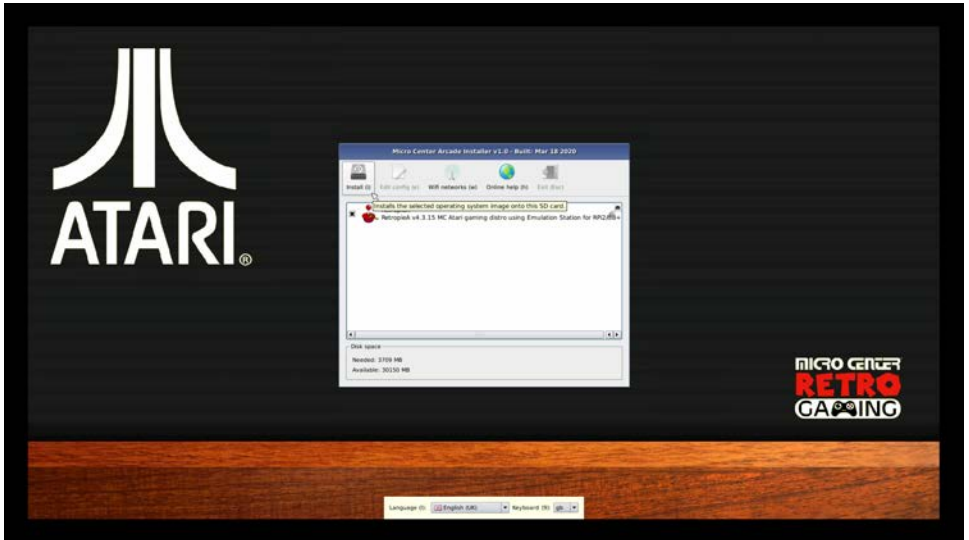
Once you hit the "OK" button, you will see the WiFi connection window.



You will need to plug in some type of wired USB controller or a keyboard and mouse to accomplish the next steps. If you would like to use a mouse only, click on the “Virtual Keyboard” checkbox.



**Step 4:** Click the check box to install the Atari RetroPie program, and then select the "INSTALL" button and then select "YES" to begin the installation.





**Step 5:** Next, the most up to date Atari game image will be downloaded to your Raspberry Pi. Depending on your internet connection this could take between 10-30 minutes.



**Step 6:** Once the upload is complete click the "OK" button and your Raspberry Pi will reboot.

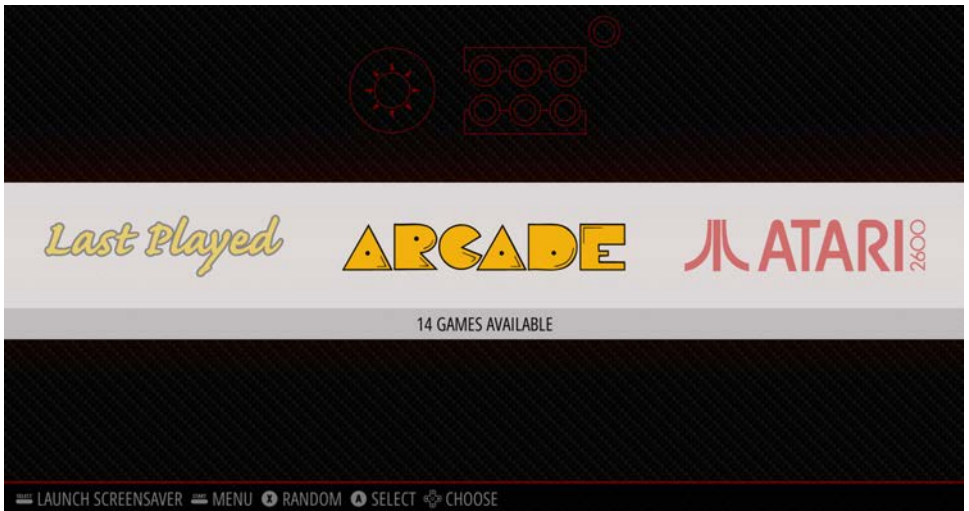




**Step 7:** Once your Raspberry Pi starts to reboot, you may see a screen like this, or you may first be asked to configure your specific controller/keyboard/mouse.



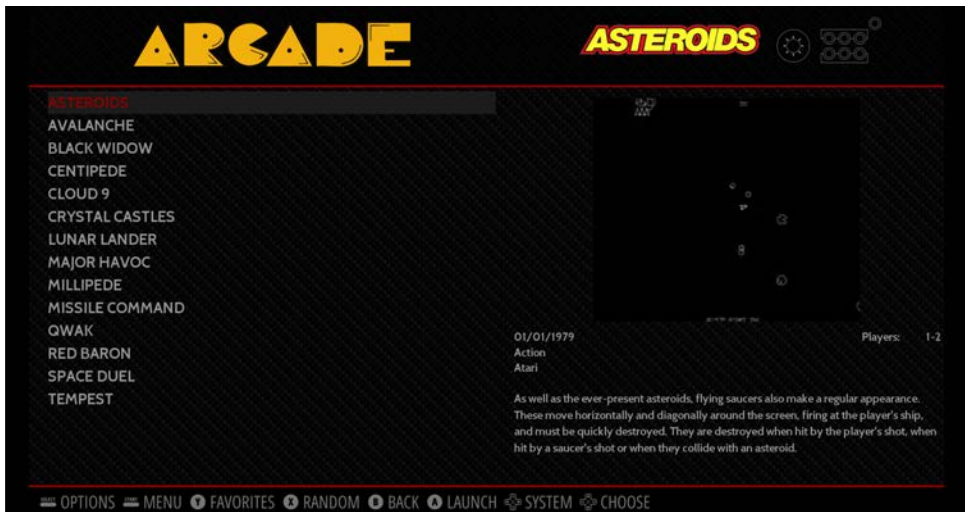
When loading is complete you will see the following screen.



**Step 8 :** Selecting a game platform and choosing a game to play. In this example, Arcade Games will be used.



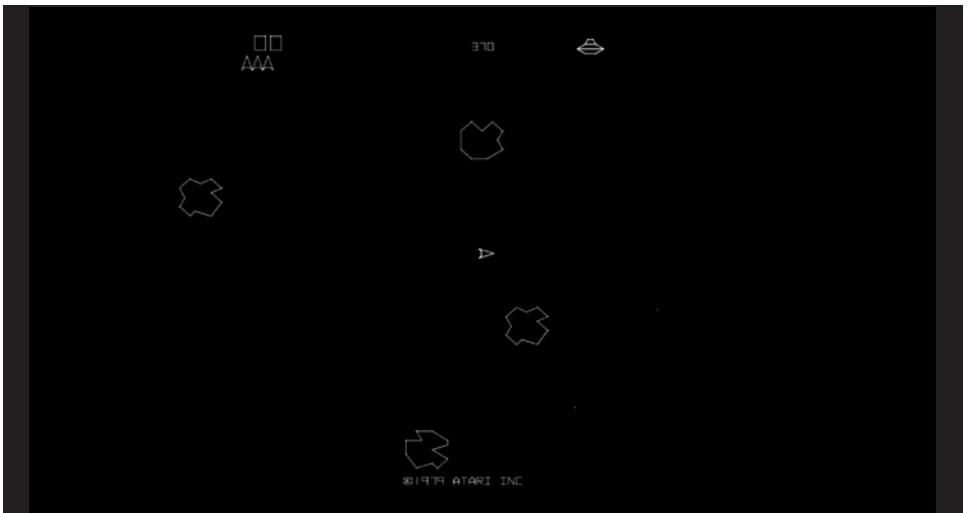
The next screen you will see is this game listing screen.



Each game will also have a preview and a short description of the game. Once you select a game the loading screen will appear.



The next screen you will see is the actual game.

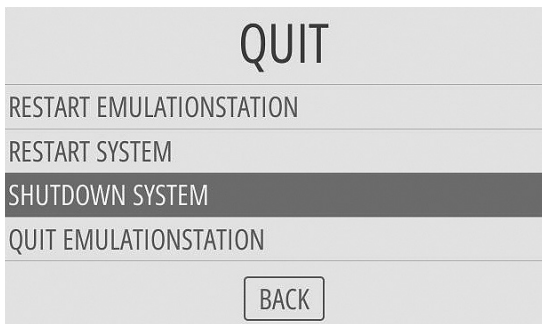


## Exiting Games Tip:

To exit out of any game simultaneously press the “Start and Select” Buttons on your Controller.

## Proper Shutdown Procedure:

Press the Start Button on your controller. This will bring up the main menu. Select QUIT.

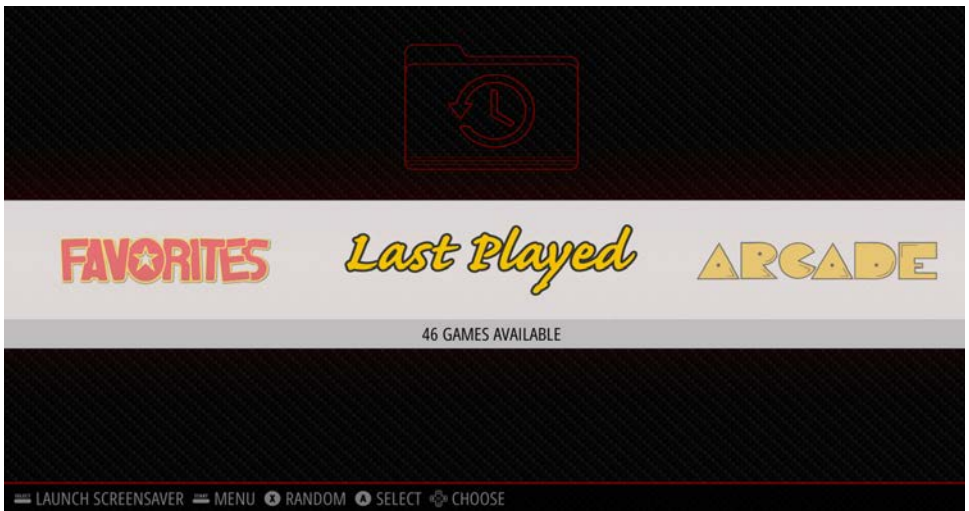
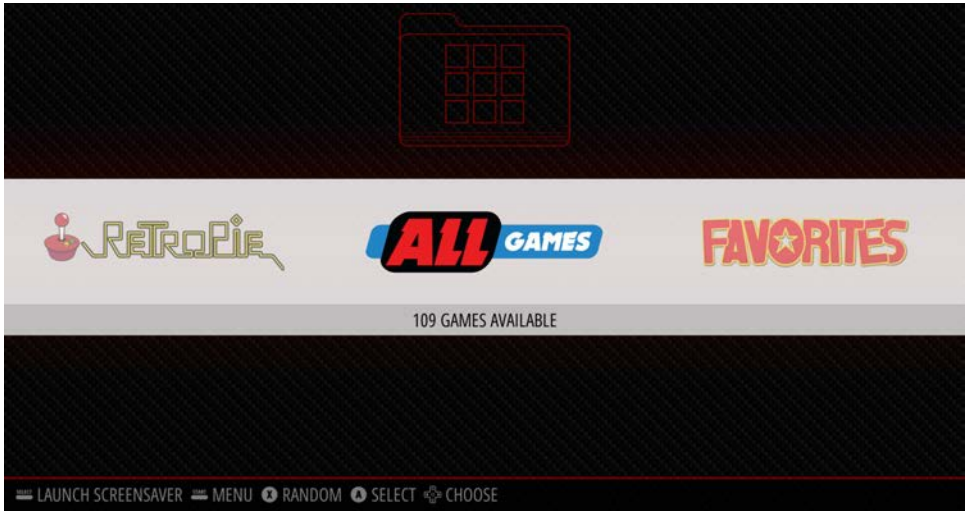


Select SHUTDOWN SYSTEM. Wait 10 seconds and remove power from the Raspberry Pi.

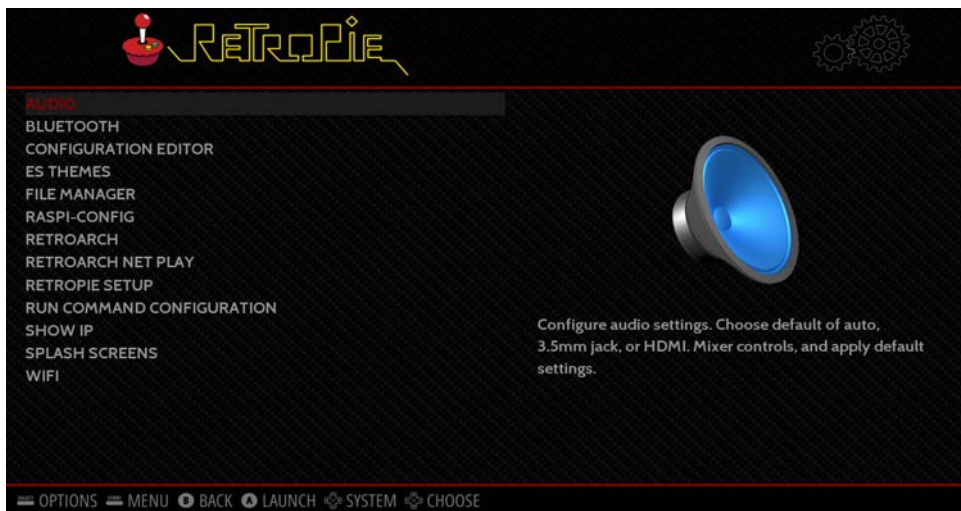
## Important Tips & Suggestions for Playing Any of the Games:

1. Each game may have different controller button configurations. They will vary by platform and by game with many not being the same. You will need to load a game and then determine what buttons do what (i.e. start the game, select # of players, shoot, jump, etc...)
2. There are many resources on the internet that can help with game controller information such as: **retroPie.org**.
3. There are advanced ways of custom mapping the controller buttons a specific way the user wants. There are many resources on the Internet to help with this.

There are a couple of additional ways to access the games. The all games menu will show you all the games available by platform in one menu.



The retroPie menu has advanced configuration settings. For more information about these settings and how to use them, please visit [retroPie.org](http://retroPie.org).





## ATARI GAMES INCLUDED: 2600

---

Saboteur	Peek-A-Boo	Canyon Bomber
Meltdown	Off the Wall	Sky Diver
MotoRodeo	Championship Soccer	Home Run
Asteroids	Missile Command	Football
Mind Maze	Miniature Golf	Dark Chambers
Frog Pond	Millipede	RealSports Volleyball
SwordQuest - EarthWorld	Maze Craze	Slot Machine
Golf	Holey Moley	Basketball
Save Mary!	Hangman	Human Cannonball
Super Breakout	Gravitar	Desert Falcon
Demons to Diamonds	Double Dunk	Codebreaker
Shooting Arcade	Hunt & Score	3-D Tic-Tac-Toe
Wizard	Crystal Castles	Steeplechase
Yars' Revenge	Combat	Indy 500
Warlords	Circus Atari	RealSports Soccer
Video Olympics	Centipede	RealSports Boxing
Video Chess	Casino	Blackjack
Video Checkers	Bowling	Stellar Track
SwordQuest - WaterWorld	Backgammon	Spitfire Attack
SwordQuest - FireWorld	Aquaventure	Adventure
Super Football	Air-Sea Battle	Boxing
Solaris	Brain Games	Breakout
Sentinel	Dodge 'Em	Quadrun
Surround	Video Pinball	Sprint Master
Submarine Commander	Secret Quest	Bionic Breakthrough
Street Racer	Haunted House	RealSports Football
RealSports Tennis	Flag Capture	Star Raiders
Radar Lock	Night Driver	RealSports Baseball
Star Ship		

## ATARI GAMES INCLUDED:

### ARCADE

---

Space Duel  
Red Baron  
Qwak  
Centipede  
Major Havoc  
Crystal Castles  
Black Widow  
Cloud 9  
Missile Command  
Millipede  
Lunar Lander  
Avalanche  
Asteroids  
Tempest

### 7800

---

Motor Psycho  
Scrapyard Dog  
Planet Smashers  
Ninja Golf  
Fatal Run  
Dark Chambers  
Basketbrawl  
Asteroids  
Food Fight  
Centipede

### **For Specific Game Play Instructions for Atari 2600, Please Visit:**

[https://atariage.com/system\\_items.php?SystemID=2600&itemTypeID=MANUAL](https://atariage.com/system_items.php?SystemID=2600&itemTypeID=MANUAL)

### **For Specific Game Play Instructions for Atari 7800, Please Visit:**

[https://atariage.com/system\\_items.php?SystemID=7800&itemTypeID=MANUAL](https://atariage.com/system_items.php?SystemID=7800&itemTypeID=MANUAL)

### **Where to Get Updates & More Information:**

Since the Raspberry Pi eco system is always evolving to bigger and better things, you should periodically head over to [microcenter.com/pi](http://microcenter.com/pi) to get the latest information about programming the Raspberry Pi.

To learn more about the Raspberry Pi, you can also head over to the Raspberry Pi foundation website at [raspberrypi.org](http://raspberrypi.org).

More advanced information on RetroPie can be found at [retroPie.org](http://retroPie.org).

### **Where to Get Help:**

If you need help, we are always here for you! Don't hesitate to stop by one of our stores which can be found across the United States. You can also chat online or email us directly through the Micro Center website at [microcenter.com](http://microcenter.com).

Did you know you can also call our technical support team at **614-850-3670**. Please make sure to have your purchase information available prior to calling so we can better answer your questions.

**Tech Support Hours of Operation:**

Monday - Friday, 9am to Midnight EDT

Saturday, 10am to Midnight EDT

Sunday, 11am to 9pm EDT

*(Excluding posted holiday hours)*

